

wits  
working in the schools

# ECSP

EARLY

CHILDHOOD

SUMMER

PROGRAM

## LITTLE RED RIDING HOOD

WEEK





# BIG BAD WOLF MASK



## Dramatic Play for Readers

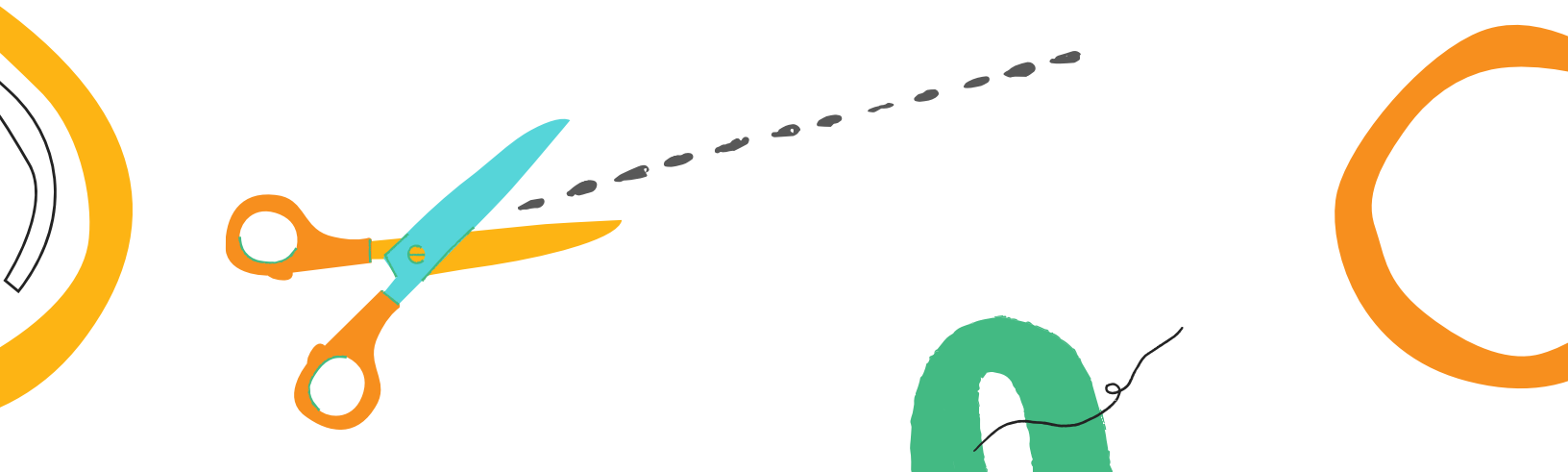
### Materials Needed:

- Paper plates (OR thin cardboard box like a cereal or shoe box)
- String (any type as long as it can securely tie mask around back of child's head.)
- Hole puncher or Scissors
- Optional for attaching string or paper to cardboard:
  - Stapler
  - Duct Tape



### Let's Make a Big Bad Wolf Costume!

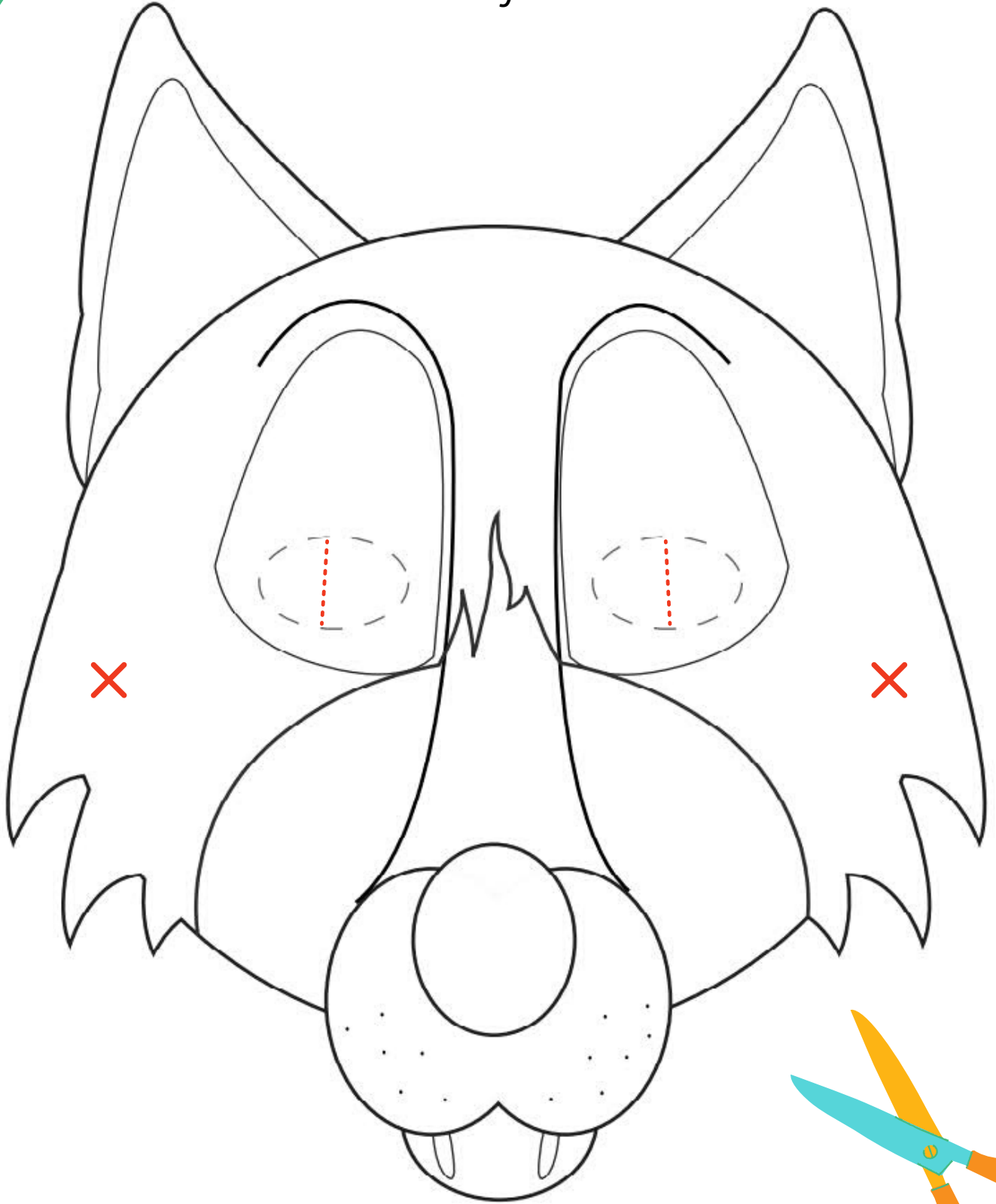
1. First, color and decorate your paper mask. (For added fun, glue shredded cotton balls to make his furry beard.)
2. Then, cut out mask along outside of the wolf head.
3. Place the face on cardboard to trace then cut out the outline shape of the wolf's face.
4. Glue or staple mask to plate/cardboard. Let dry.
5. To cut out eyes through cardboard: Fold mask along one of the dotted lines that are drawn across the eye opening. Cut across it and then open up the eye opening with scissors as shown.
6. Cut out two long strings or strips of thick paper, making sure to leave enough room for tying.
7. Punch holes or puncture slits at the sides of the mask marked X.
8. Tie strings on either side of mask. Bring strings together to tie in a bow around back of the wearer's head.



2

# BIG BAD WOLF MASK

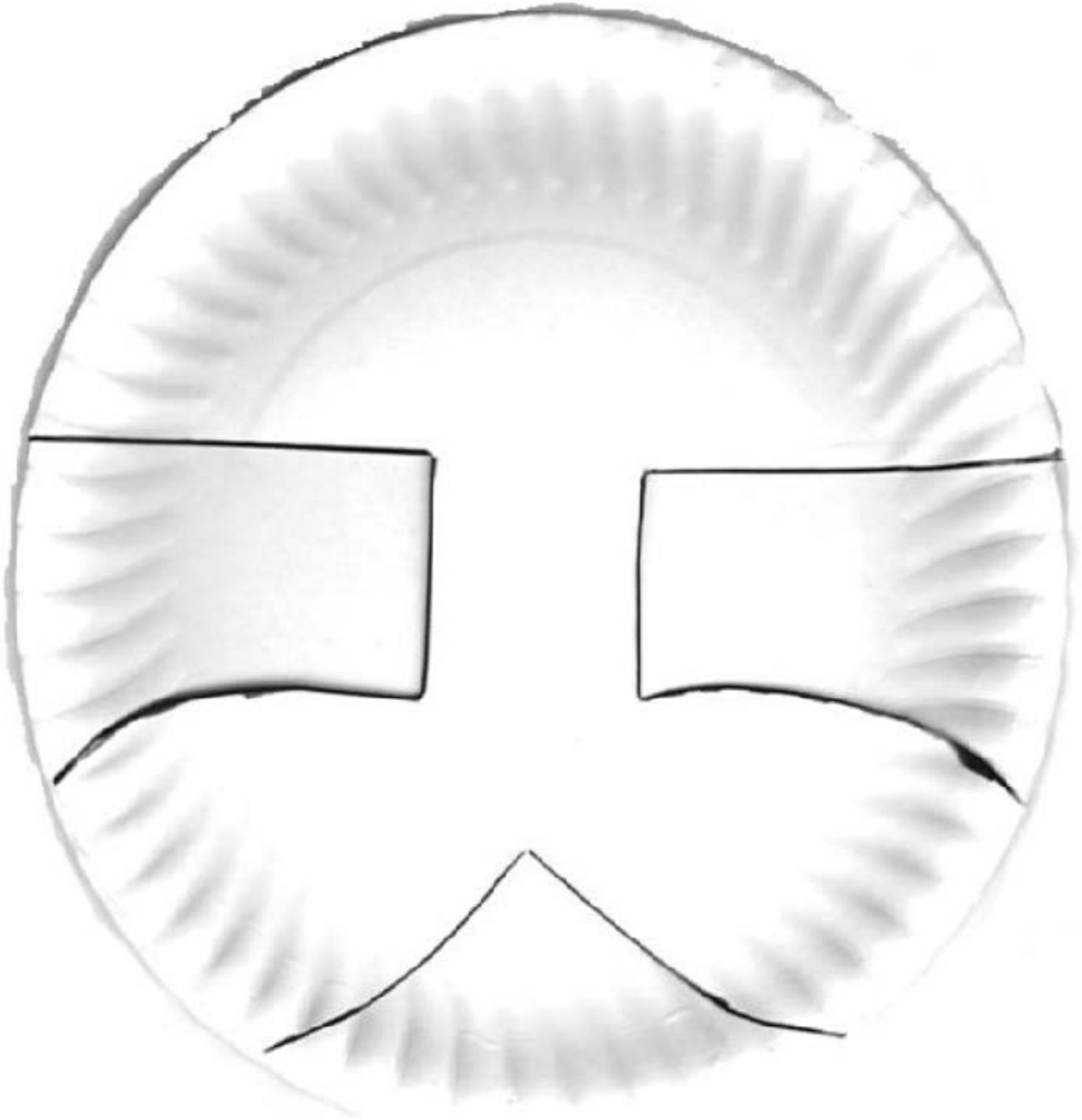
Dramatic Play for Readers





# BIG BAD WOLF MASK

Dramatic Play for Readers



Trace the following template onto a paper plate (18.5 cm diameter). You can print this page out as a stencil. Pre-cut or have students cut along the black lines. Save the 3 excess pieces to make the wolf's teeth.



# BIG BAD WOLF MASK

Dramatic Play for Readers

